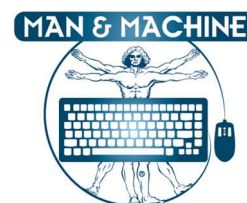


Man & Machine Europe
Tappersweg 10-C
2031 ET Haarlem
The Netherlands
info@mmieu.com
Tel: +31 23 5450185



Its Cool Flat Wireless communication specifications

To avoid interference with other wireless devices, the Its Cool Flat Wireless keyboard operates over 16 channels in the 2.4GHz RF band and 40 channels for Bluetooth™ communication. It uses frequency hopping to dynamically switch between channels based on the available frequencies. If interference is detected on a channel, the keyboard will automatically hop to a clearer one to maintain a stable connection.

Parameter	Details
Power Supply	Dongle: DC 5V for Computer Keyboard: Input: DC 5V DC 3.7V by Rechargeable Lithium-ion Battery, 250mAh
Hardware Version	V1.1
Software Version	V1.1
Bluetooth - Frequency Range	2402MHz ~ 2480MHz
Bluetooth - Channel Number	40 channels for Bluetooth V5.2 (BT LE/BT 2LE)
Bluetooth - Channel Spacing	2MHz for Bluetooth V5.2 (BT LE/BT 2LE)
Bluetooth - Modulation Type	GFSK for Bluetooth V5.2 (BT LE/BT 2LE)
Bluetooth - Bluetooth Version	V5.2
Bluetooth - Antenna Description	PCB Antenna, -1.66dBi (Max.)
2.4G - Frequency Range	2403MHz~2480MHz (2403, 2407, 2414, 2419, 2422, 2426, 2436, 2439, 2441, 2445, 2453, 2459, 2463, 2466, 2473, 2480 (Unit: MHz))
2.4G - Channel Number	16
2.4G - Modulation Type	GFSK
2.4G - Antenna Description	PCB Antenna, -1.66dBi (Max.)